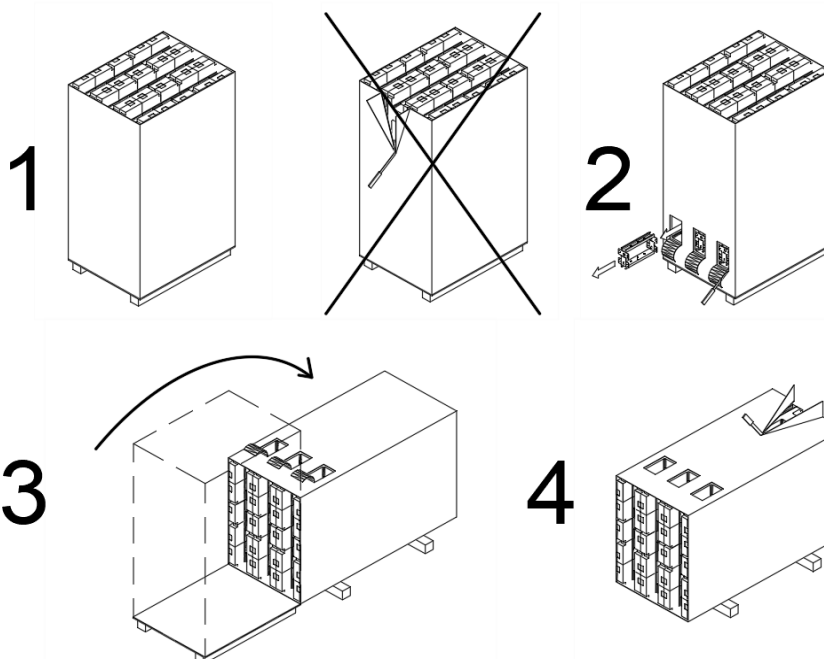


RADICSOL - ISTRUZIONI VELOCI

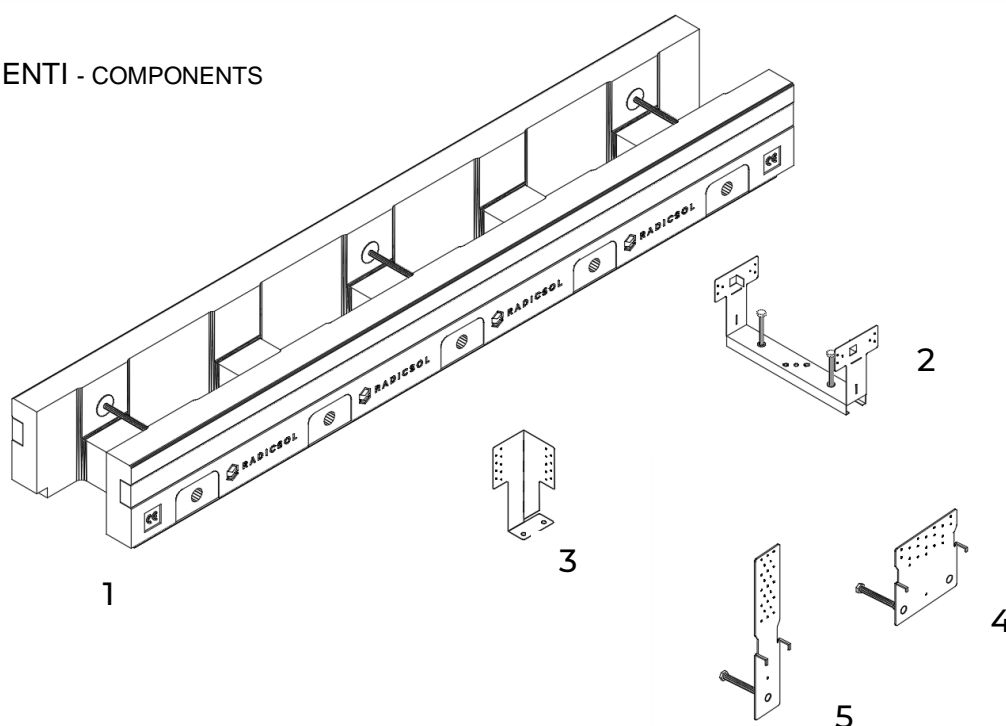
RADICSOL - QUICK INSTALLATION

REV. 11.2023

ATTENZIONE per apertura - CAUTION to open



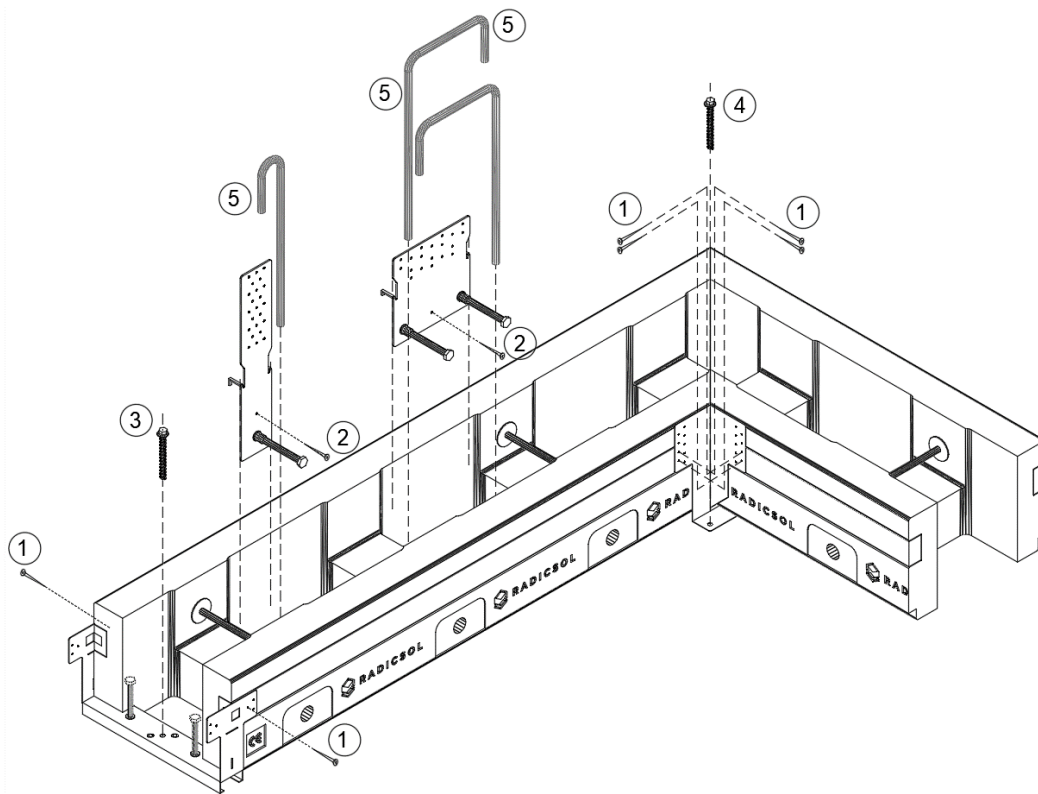
COMPONENTI - COMPONENTS



- 1 BARRA CASSERO RADICSOL - RADICSOL FORMWORK
- 2 STAFFA DI CONNESSIONE LONGITUDINALE - BRACKET FOR LONGITUDINAL JOINT
- 3 STAFFA DI CONNESSIONE ANGOLARE - BRACKET FOR ANGULAR JOINT
- 4 STAFFA PREMONTABILE SLP20 - EMBEDDABLE ANCHOR PLATE SLP20
- 5 STAFFA PREMONTABILE HD50 - EMBEDDABLE ANCHOR PLATE art. HD50

MATERIALI E ATTREZZATURE OCCORRENTI (non inclusi)

MATERIALS AND REQUIRED EQUIPMENT (not included)



1. Viti Torx x legno mm3,5x40/50 – Torx wooden screw mm3,5x40/50
2. Viti Torx x legno mm3,5x70/80 – Torx wooden screw mm3,5x70/80
3. Viti per C.A. mm7.5/8x120/140 (testa non svasata sotto - foro mm6)
Concrete screws mm7.5/8x120/140 (Hex Head - drilling mm6)
4. Viti per C.A. mm7.5x70 (testa non svasata sotto - foro mm6)
Concrete screws mm7.5x70 (Hex Head - drilling mm6)
5. Ferro per connettori - rebars connectors

ATTREZZATURE OCCORRENTI:

EQUIPMENT REQUIRED:

Segaccio a mano per legno con denti piccoli (x taglio RADICSOL)

Hand wood saw (to cut RADICSOL)

Coltello per polistirene – polystyrene knife or cutter

Trapano Avvitatore - screwdriver drill

Trapano Tassellatore - rotary hammer drill

Livello laser – laser level

Filo tracciante - chalk string line reel level

Resina per connettori – resin for chemical rebar planting

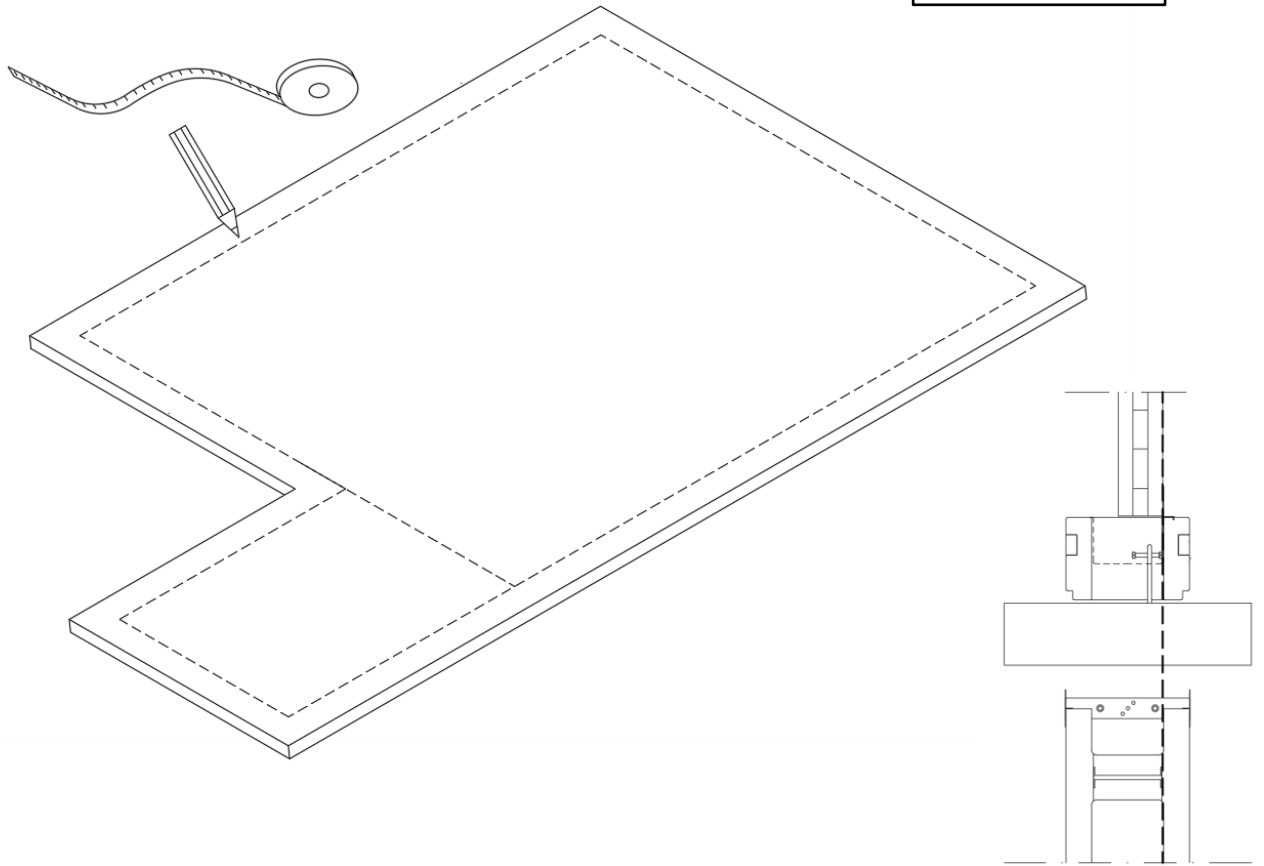
Schiuma poliuretanic di montaggio spray alta espansione – high expansion constructions spray polyurethan PU foam

Calcestruzzo fluidità S4 con inerte max 15-20mm – S4 15-20mm concrete

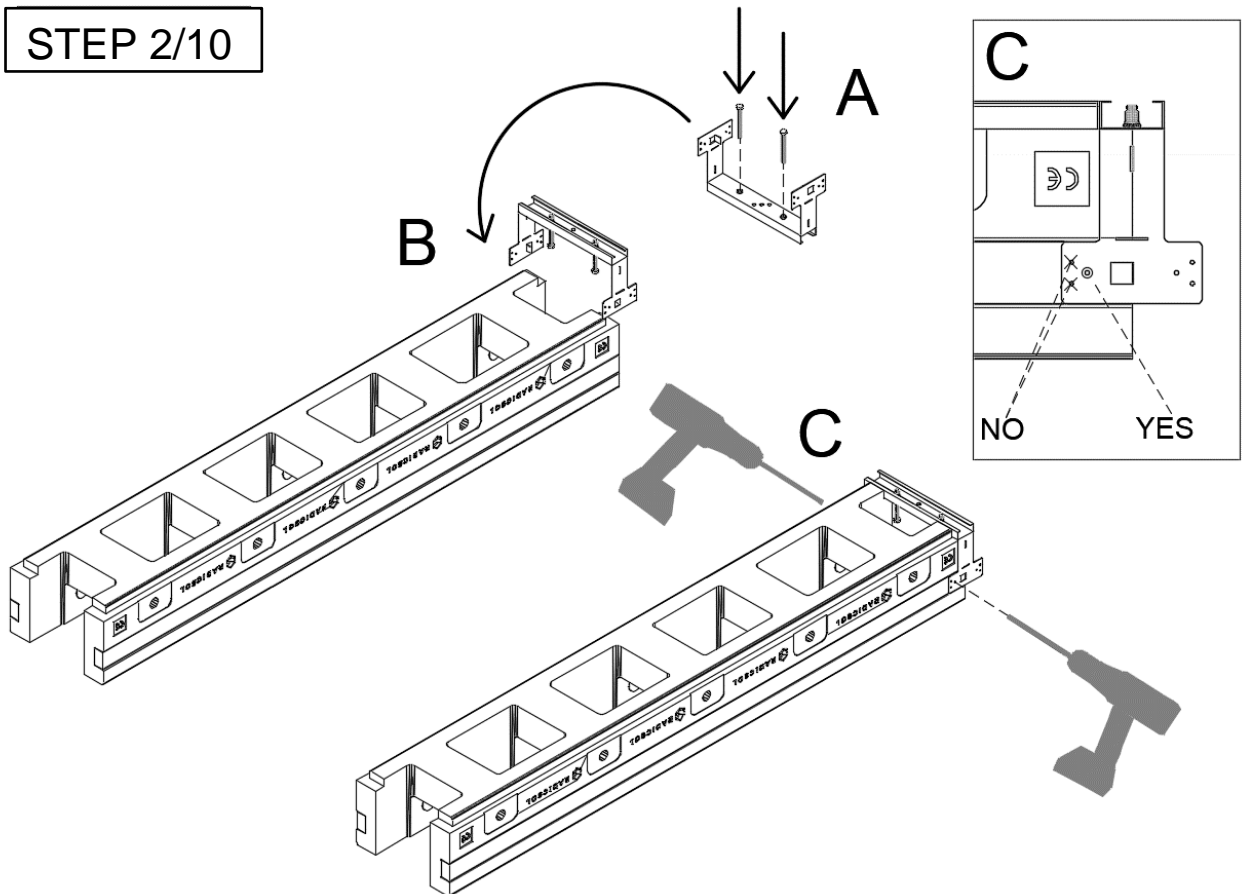
IMPORTANTE – IMPORTANT

NON VIBRARE IL CALCESTRUZZO!! – DO NOT USE CONCRETE VIBRATOR !!

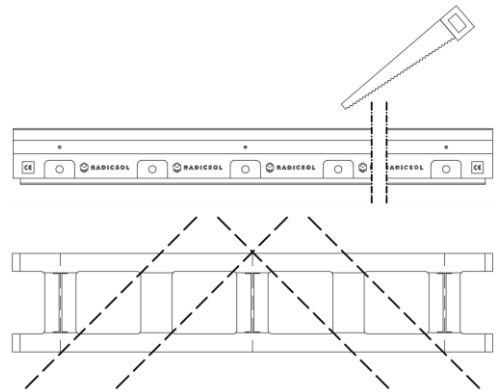
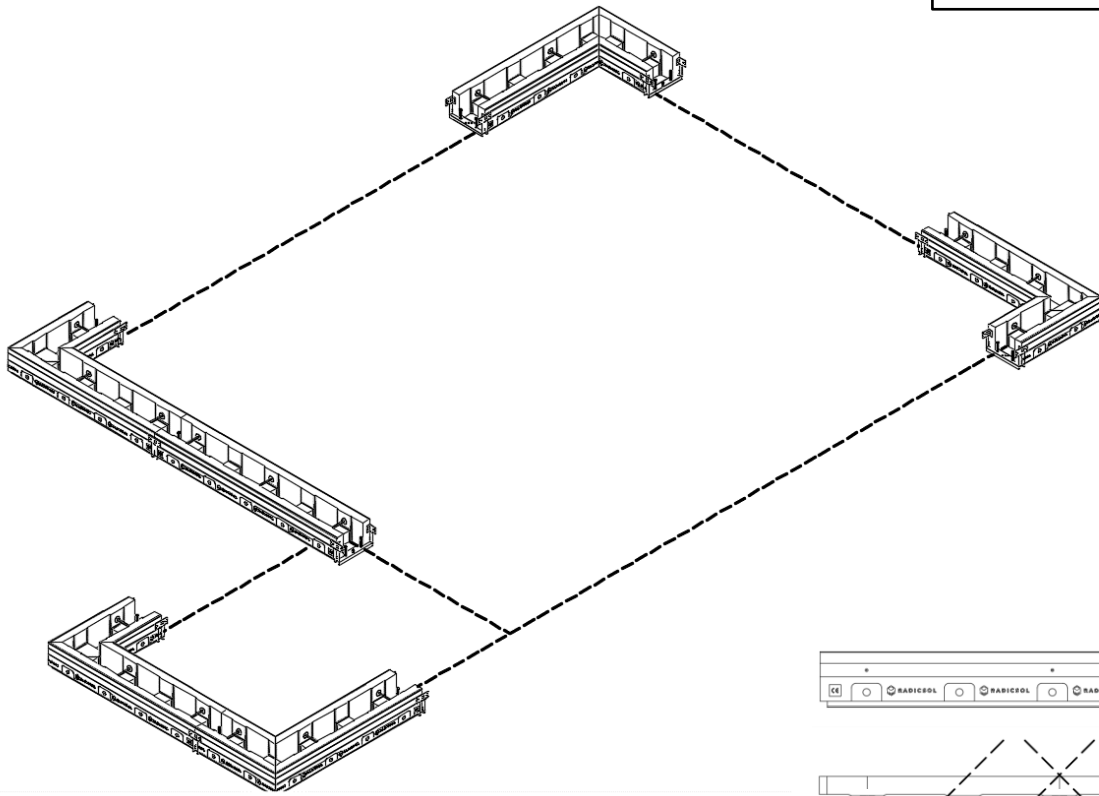
STEP 1/10



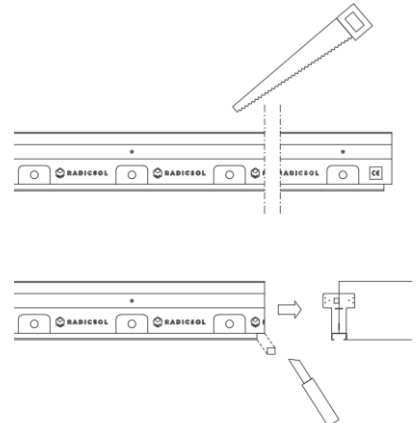
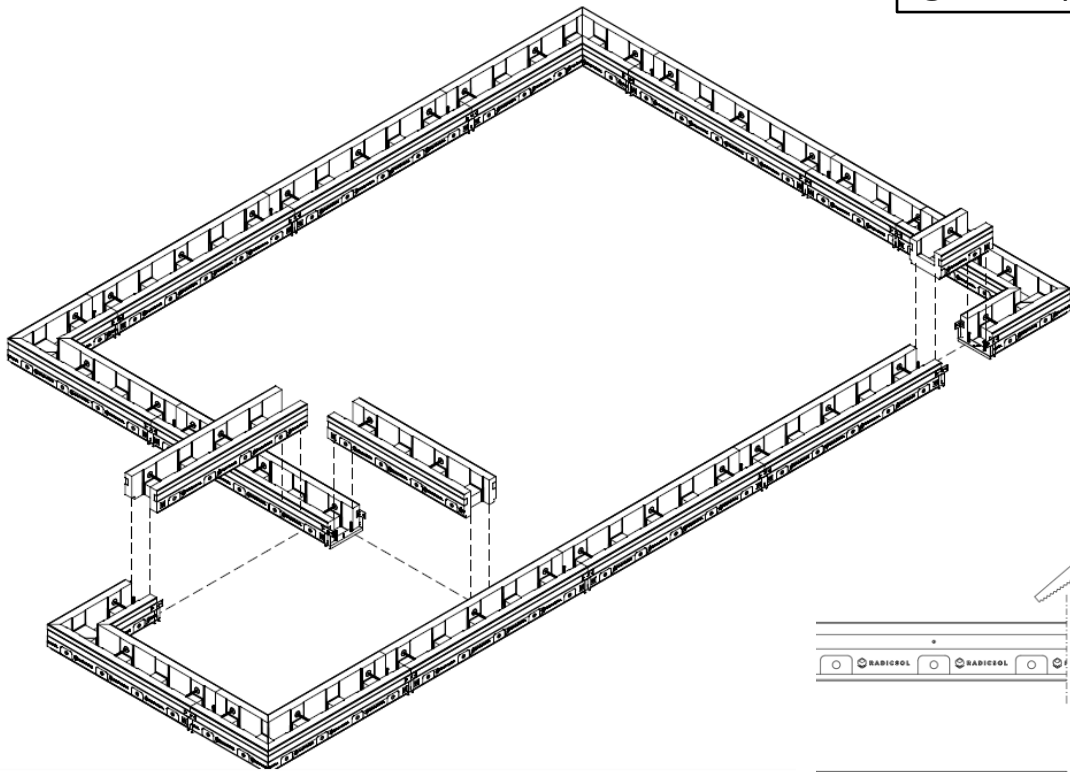
STEP 2/10



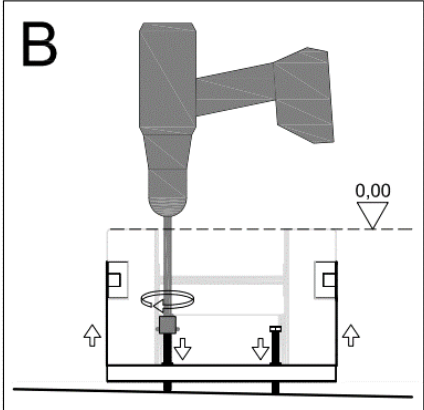
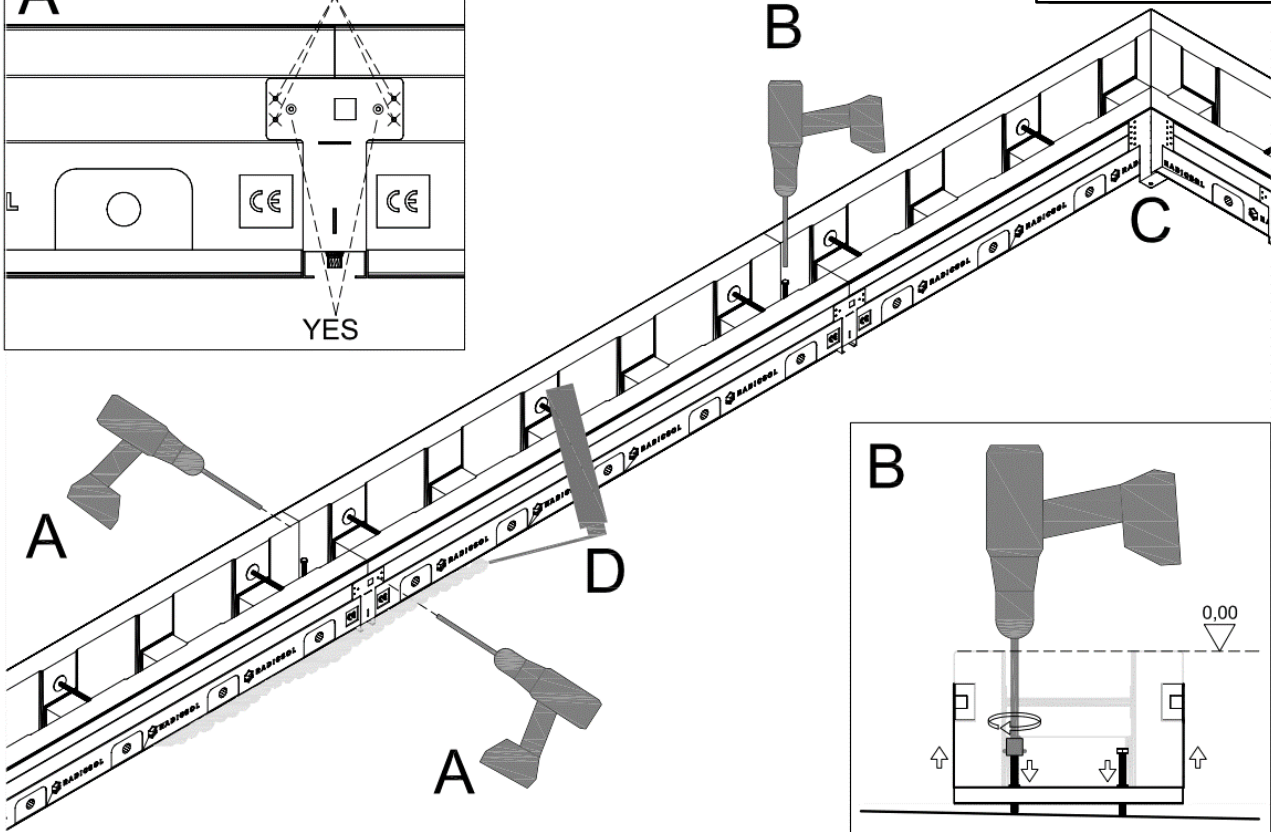
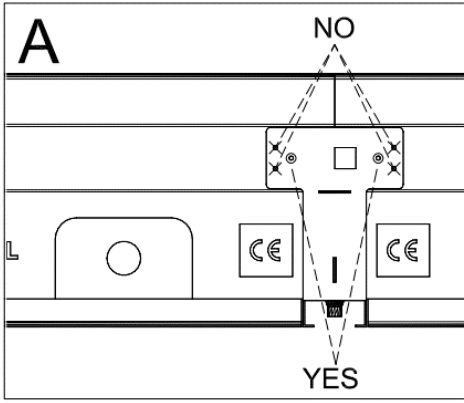
STEP 3/10



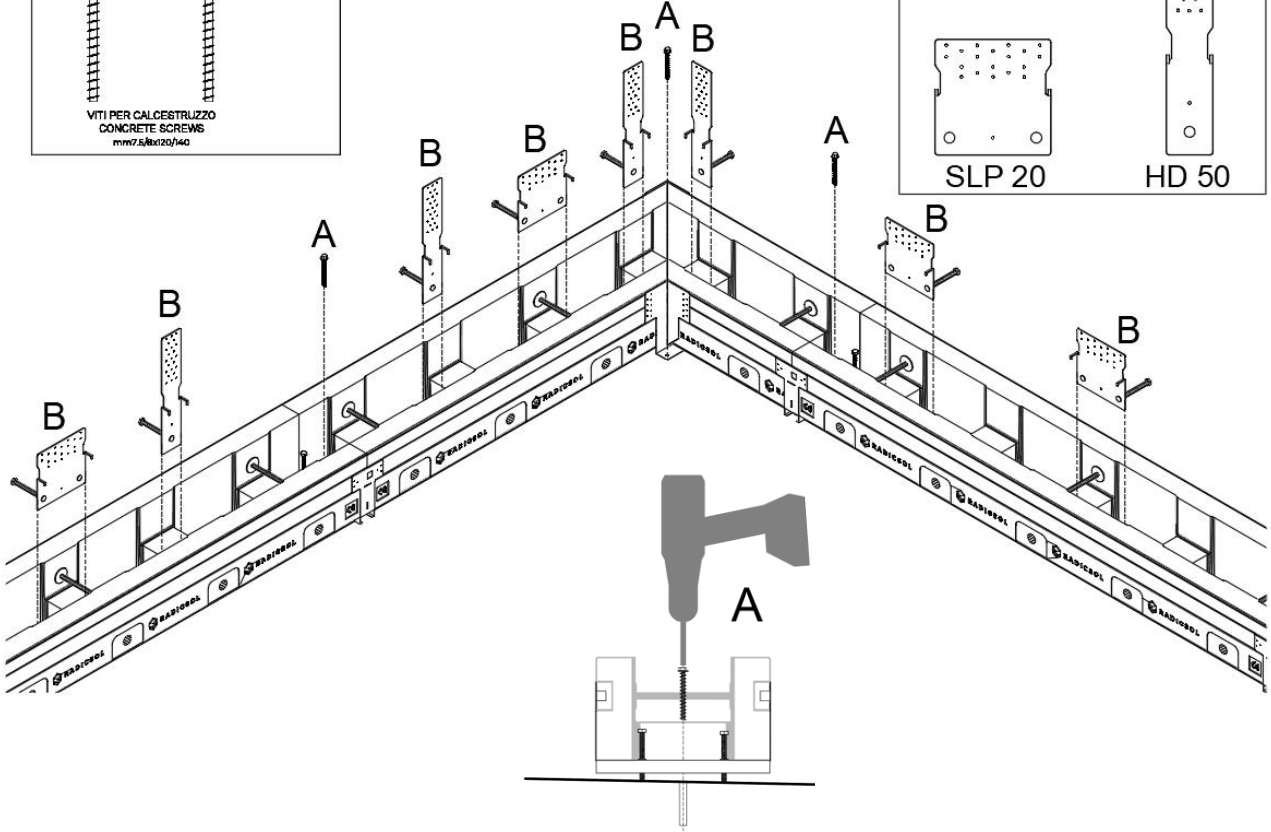
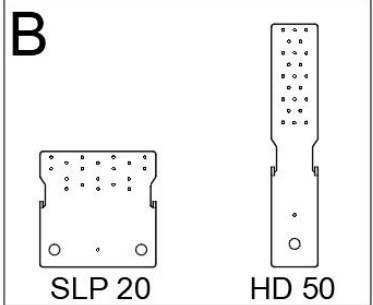
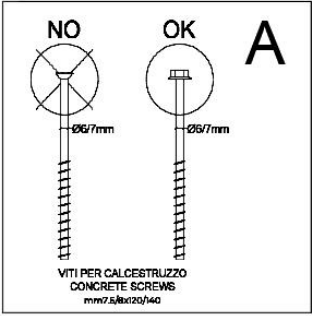
STEP 4/10



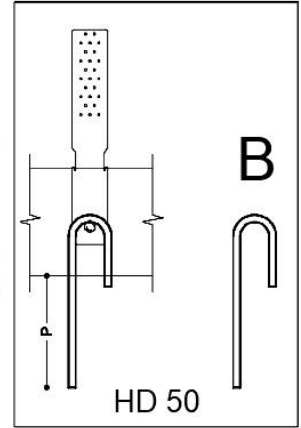
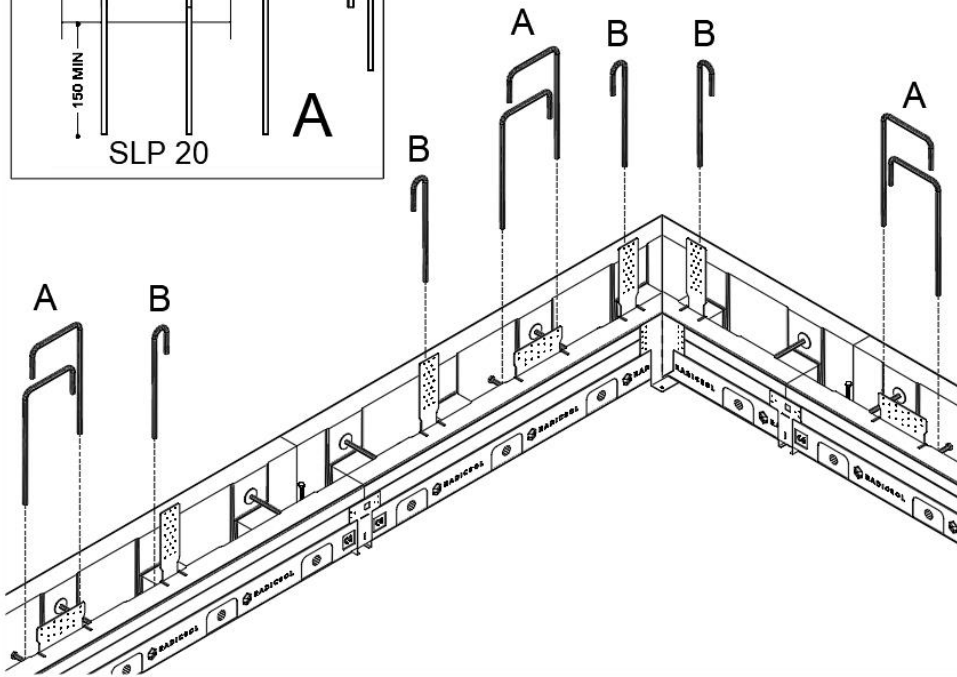
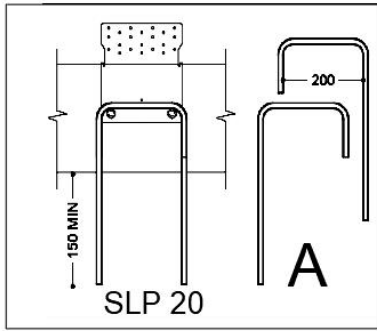
STEP 5/10



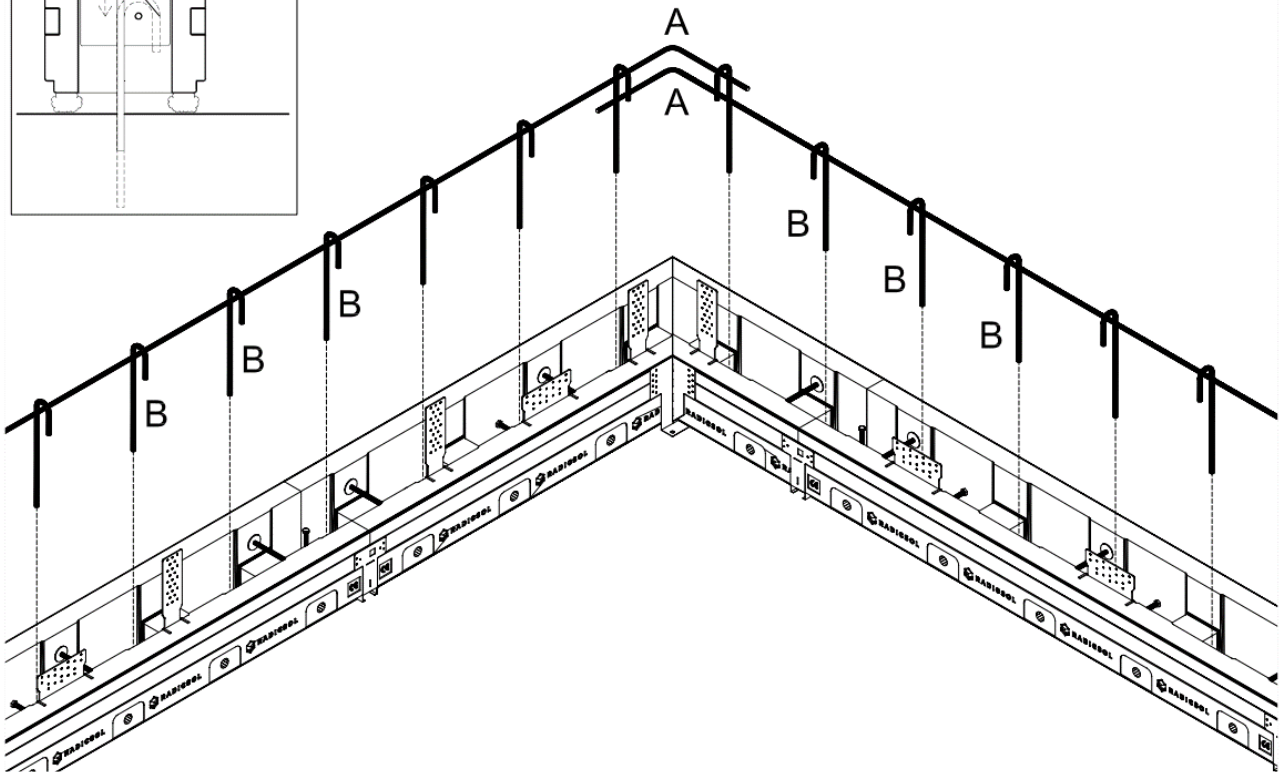
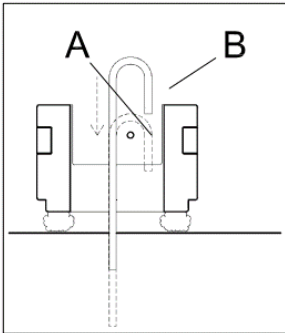
STEP 6/10



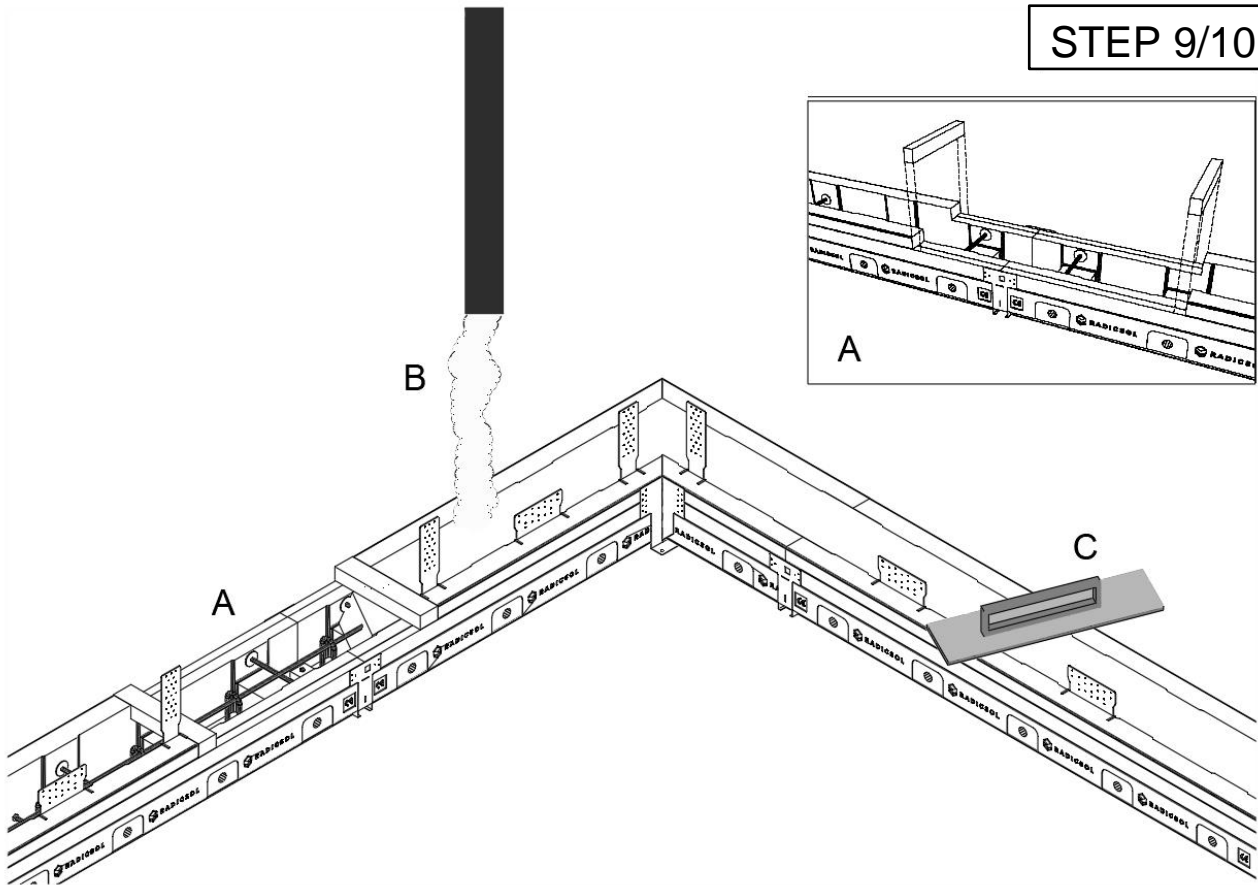
STEP 7/10



STEP 8/10



STEP 9/10

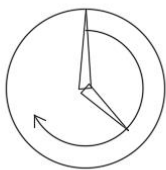
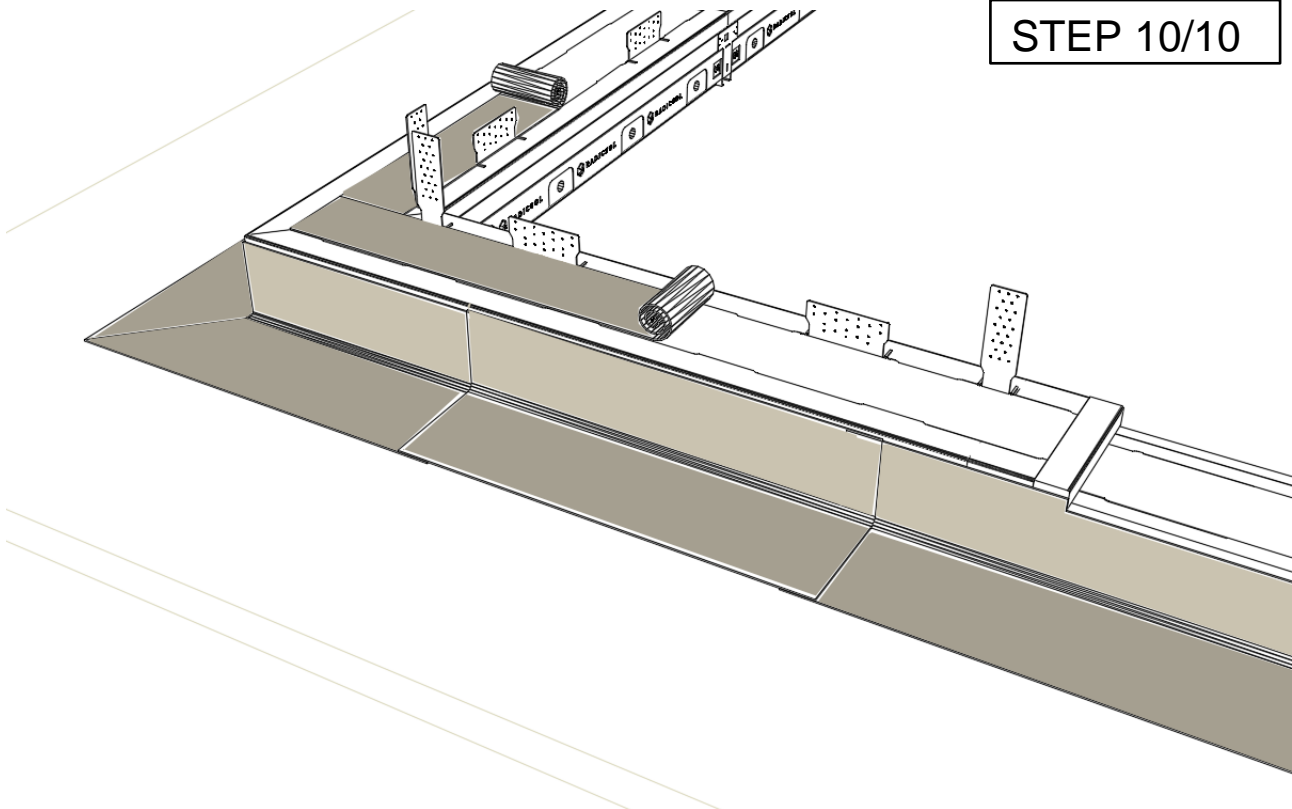


NON VIBRARE !! – DO NOT USE CONCRETE VIBRATOR !!

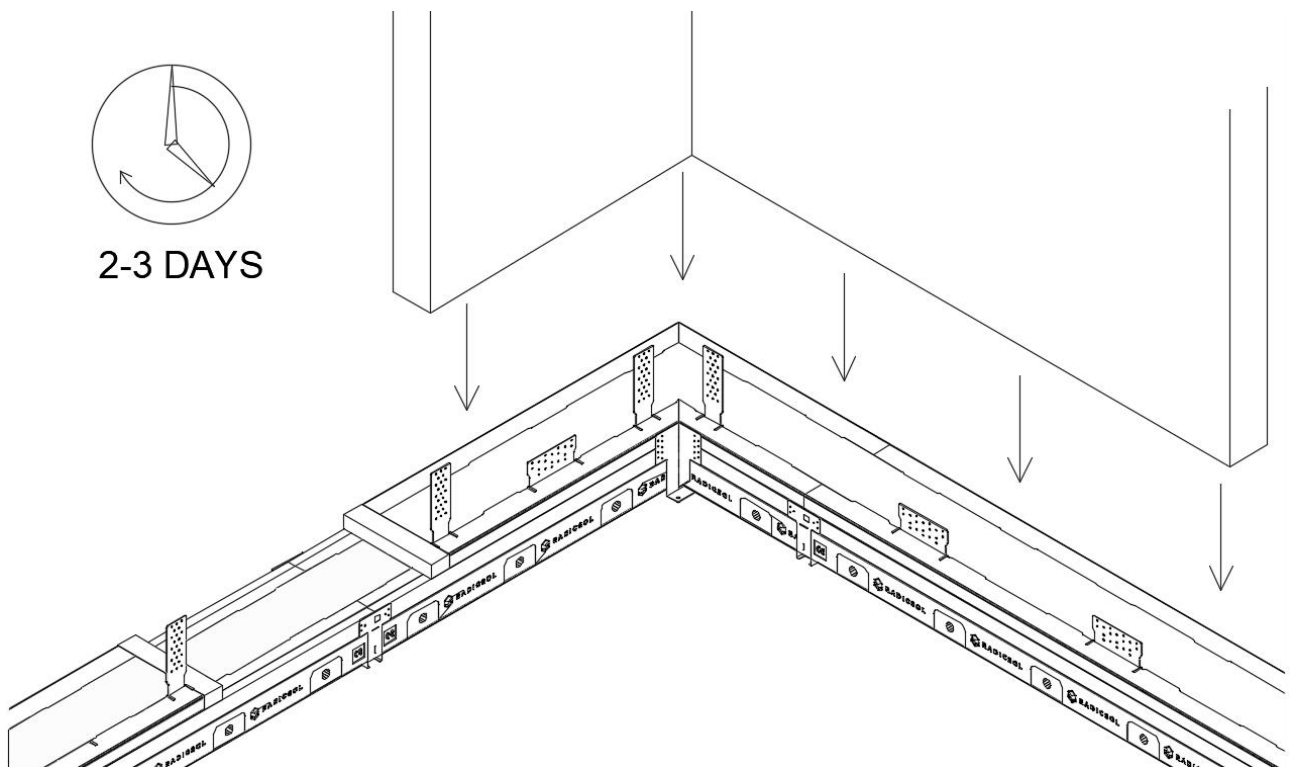
VOLUME DI RIEMPIMENTO CALCESTRUZZO - APPROSSIMATIVO (senza regolazione altezza):
CONCRETE FILLING VOLUME - APPROXIMATELY (without height adjustment):

RADICSOL 140	0,033 mc/ml	RADICSOL 250	0,057 mc/ml
RADICSOL 170	0,040 mc/ml	RADICSOL 280	0,064 mc/ml
RADICSOL 200	0,046 mc/ml	RADICSOL 400	0,090 mc/ml

STEP 10/10



2-3 DAYS

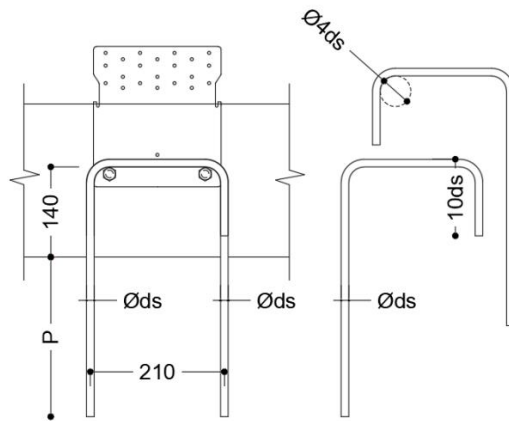
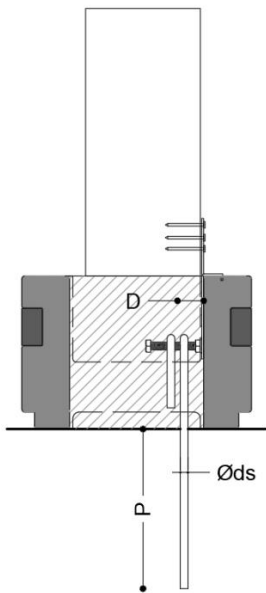
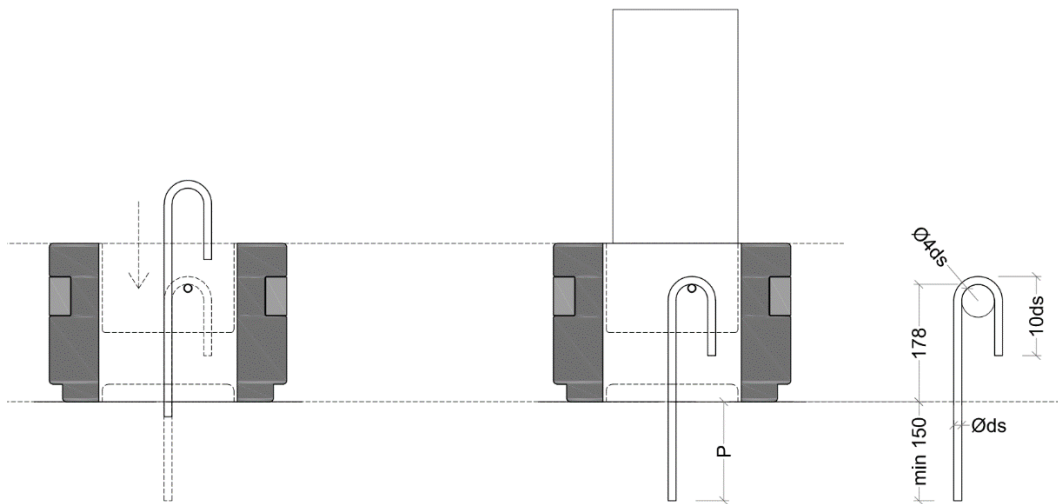


SCARICA ISTRUZIONI COMPLETE DA www.radicsol.it/download

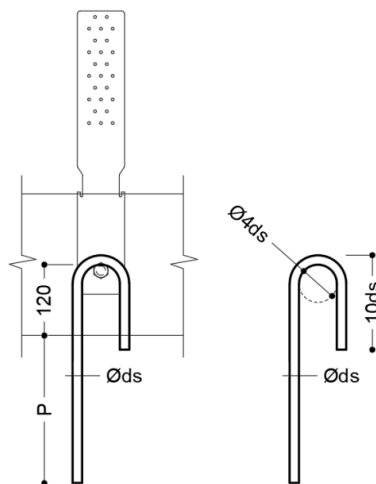
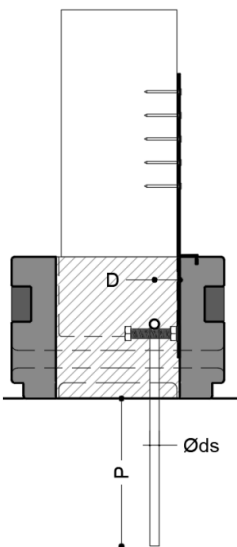
DOWNLOAD MORE AT www.radicsol.it/download



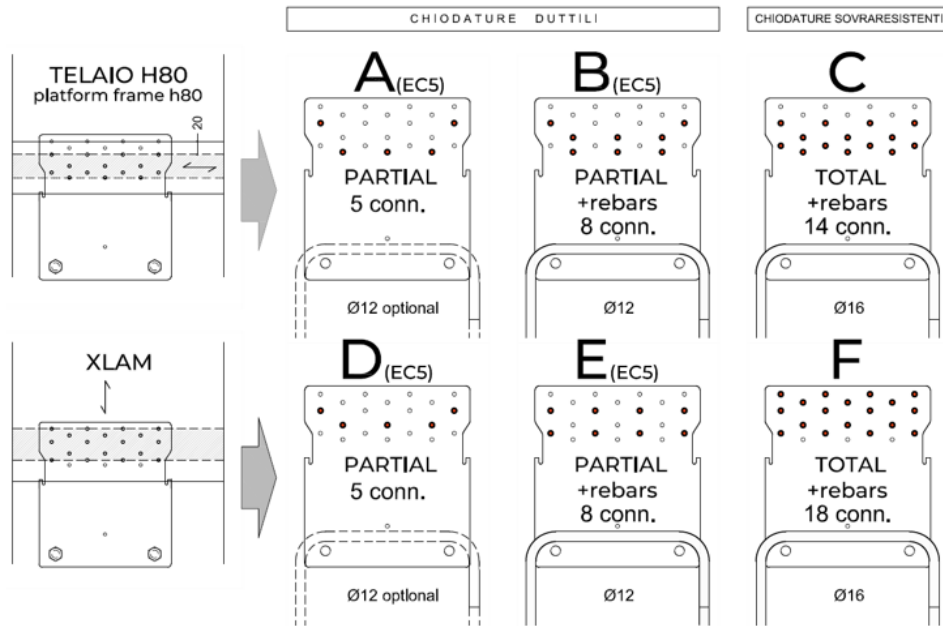
FERRI RIPRESA – REBARS GEOMETRY



P	Da calcolo - to be calculated
D	COPRIFERRO 2.5cm c.a



RADICSOL SLP20 - SCHEMA CHIODATURE STAFFE – Nailing brackets



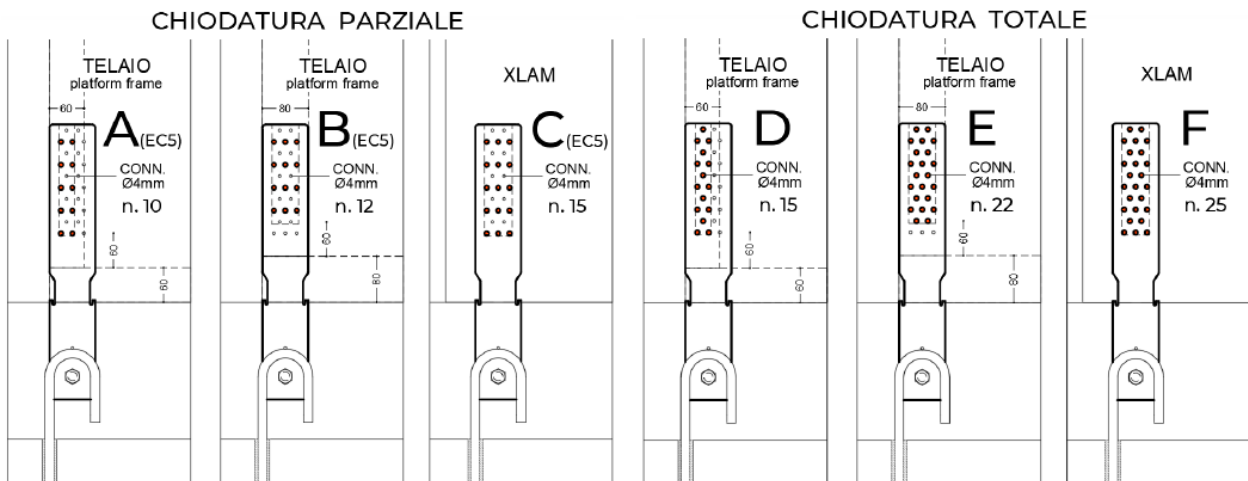
RISPETTARE LE CHIODATURE DI PROGETTO PER CIASCUNA STAFFA

Respect the project nails for each bracket



RADICSOL
DOVE INIZIA LA TUA CASA

RADICSOL HD50 - SCHEMA CHIODATURE – Nailing brackets



RISPETTARE LE CHIODATURE DI PROGETTO PER CIASCUNA STAFFA

Respect the project nails for each bracket



RADICSOL
DOVE INIZIA LA TUA CASA